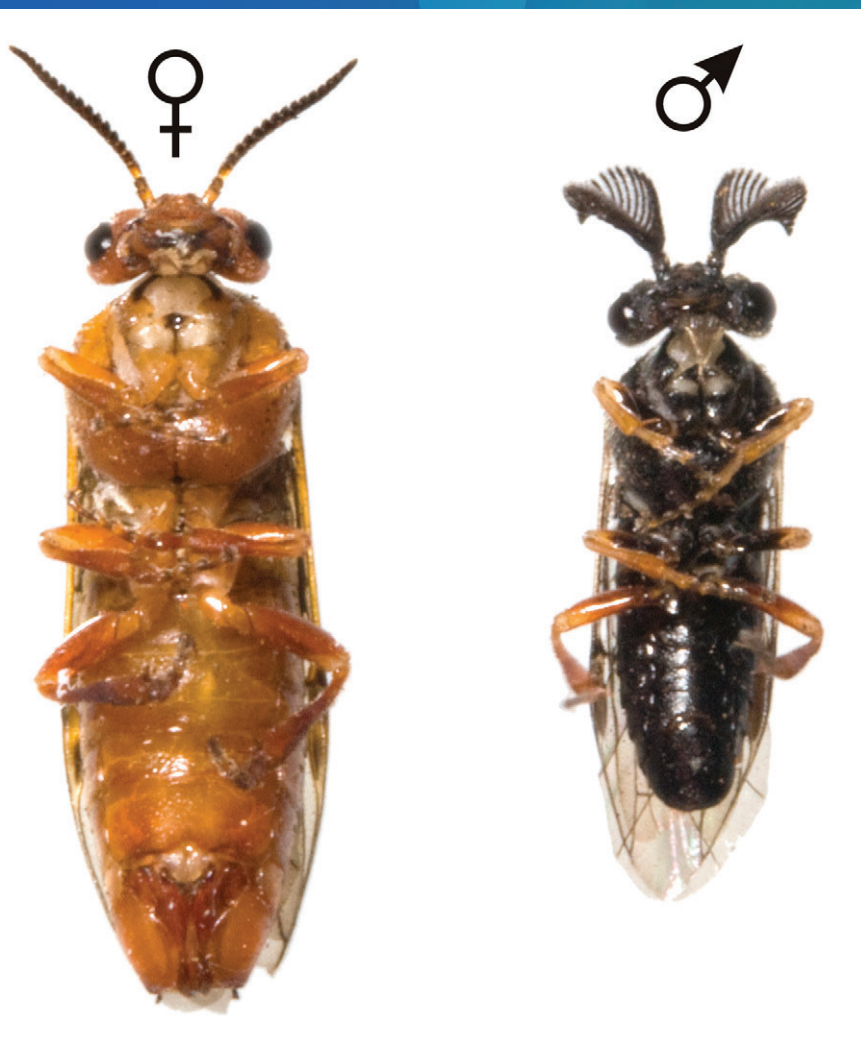


Chemical Senses



In this issue:

An Ancient Olfactory Trait

Olfactory Sensitivity in Hunger States

Antennal Lobe Organization and Life History

In association with
Association for Chemoreception Sciences
European Chemoreception Research Organization
Japanese Association for the Study of Taste and Smell

www.chemse.oxfordjournals.org

OXFORD
UNIVERSITY PRESS